



Hislop Road | Rugeley | WS15 1LS
Offers In The Region Of £170,000

 **Webbs**
estate agents

Summary

Nestled on the sought-after Hislop Road within the Pear Tree Estate, we are pleased to present this charming semi-detached family home, offered with no upward chain. This delightful property boasts three generously sized bedrooms, making it an ideal choice for families or first-time buyers seeking a comfortable living space.

Upon entering, you will find two inviting reception rooms that provide ample space for relaxation and entertaining. The layout is both practical and welcoming, allowing for a seamless flow between the living areas. The property also features a well-appointed bathroom, ensuring convenience for all residents.

The location is particularly advantageous, as it is within easy reach of local amenities, including shops and parks, which cater to everyday needs. Families will appreciate the proximity to well-regarded schools, making the morning school run a breeze. Additionally, excellent transport links are nearby, providing easy access to the wider area and beyond.

This semi-detached house presents a wonderful opportunity to create a warm and loving home in a vibrant community. With its spacious interiors and prime location, it is a property not to be missed. We invite you to arrange a viewing and discover the potential this lovely home has to offer.

Key Features

- NO UPWARD CHAIN
- TWO RECEPTION ROOMS
- UTILITY ROOM
- POPULAR ESTATE POSITION
- THREE BEDROOMS
- KITCHEN
- REAR GARDEN

Rooms and Dimensions

Full Description

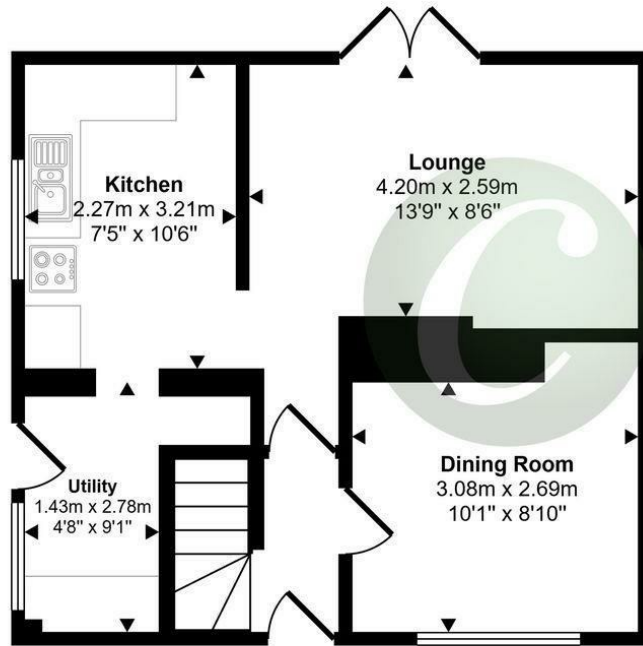
Identification Checks (R)

Sales Details (R)

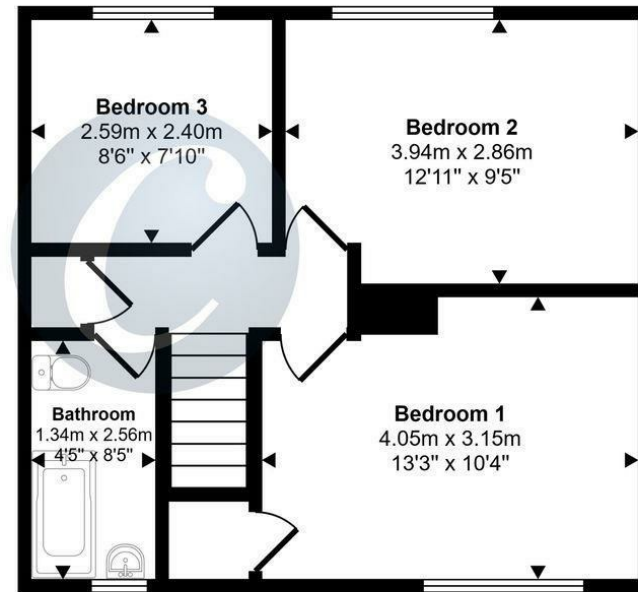




Approx Gross Internal Area
80 sq m / 866 sq ft



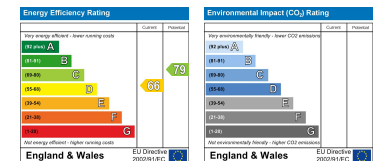
Ground Floor
Approx 40 sq m / 432 sq ft



First Floor
Approx 40 sq m / 434 sq ft

This floorplan is only for illustrative purposes and is not to scale. Measurements of rooms, doors, windows, and any items are approximate and no responsibility is taken for any error, omission or mis-statement. Icons of items such as bathroom suites are representations only and may not look like the real items. Made with Made Snappy 360.

Webbs Estate Agents - endeavour to maintain accurate depictions of properties in Virtual Tours, Floor Plans and descriptions, however, these are intended only as a guide and purchasers must satisfy themselves by personal inspection.



Globe House Upper Brook Street, Rugeley, Staffordshire, WS15 2DN

Tel: 01889 583377 | Email: rugeley@webbsea.co.uk | www.webbestateagents.co.uk